

# Lesmahagow High School



## **P7 Parents' Information Evening** *Journey to Lesmahagow*

***"Aspire to be our best"***

To empower learners with the skills to succeed and realise their true potential.



**Respect   ☐   Honesty   ☐   Ambition   ☐   Resilience   ☐   Equity**

# Purpose of this evening

1. To introduce the Extended Support Faculty.
1. To provide an update on our Transition Programme – *‘Journey to Lesmahagow’* .
1. To offer additional information to prepare pupils and parents for Secondary School life.
1. To give you the opportunity to ask any questions.

***“Aspire to be our best”***

To empower learners with the skills to succeed and realise their true potential.



**Respect** ☐ **Honesty** ☐ **Ambition** ☐ **Resilience** ☐ **Equity**

# Our School Captains



***“Aspire to be our best”***

To empower learners with the skills to succeed and realise their true potential.



**Respect** ☐ **Honesty** ☐ **Ambition** ☐ **Resilience** ☐ **Equity**

# School Captains

- A little about me, I enjoy playing football and hanging out with my friends. My favourite subjects are maths and physics because I love solving different equations and problems.
- Lesmahagow High School is a lovely School and I'm sure you will enjoy it, everyone is so respectful honest and very resilient, I'll be looking forward to seeing everyone soon and will be here until June before I go out to the big world, to answer any questions, worries or want more information about our lovely school.

***“Aspire to be our best”***

To empower learners with the skills to succeed and realise their true potential.



**Respect** □ **Honesty** □ **Ambition** □ **Resilience** □ **Equity**



# Senior Management Team



Miss Lee- HT

Mrs Docherty - DHT



Mrs Wright – *Acting*  
DHT



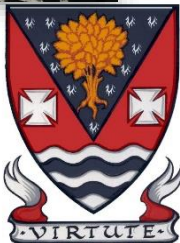
Mr Gray - DHT



Mr Robertson - DHT

***“Aspire to be our best”***

To empower learners with the skills to succeed and realise their true potential.



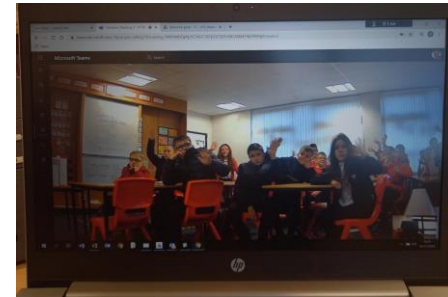
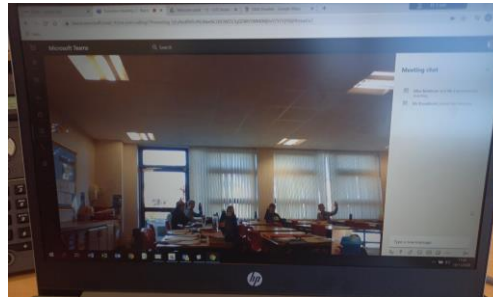
**Respect   □   Honesty   □   Ambition   □   Resilience   □   Equity**

# Head Teacher's Welcome



Miss Lee

Welcome to our school community! It was my pleasure to meet with all P7 pupils in November and December 2021. We are extremely proud of all of our pupils in Lesmahagow High School, of the skills they develop and of their achievements. We look forward to welcoming our new S1 pupils in August 2022.



***“Aspire to be our best”***

To empower learners with the skills to succeed and realise their true potential.



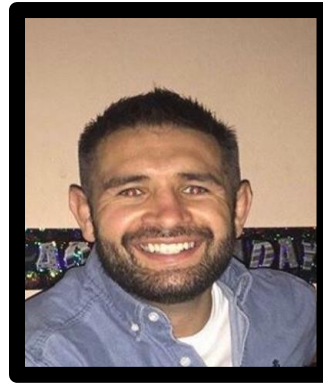
**Respect    Honesty    Ambition    Resilience    Equity**

# Pupil Support

The Principal Teachers of Pupil Support are:



Mr Mallaghan  
Kerse House



Mr Hill  
Logan House



Mr Robson  
Milton House

***“Aspire to be our best”***

To empower learners with the skills to succeed and realise their true potential.



**Respect** ☐ **Honesty** ☐ **Ambition** ☐ **Resilience** ☐ **Equity**

# Support for Learning

The Principal Teachers of Support for Learning are:



Mrs Storry



Mrs Laird

***“Aspire to be our best”***

To empower learners with the skills to succeed and realise their true potential.



**Respect** ☐ **Honesty** ☐ **Ambition** ☐ **Resilience** ☐ **Equity**



# Equity and Inclusion

The Principal Teachers of Equity and Inclusion are:



Mrs Smith



Miss Fletcher

***“Aspire to be our best”***

To empower learners with the skills to succeed and realise their true potential.



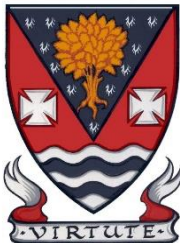
**Respect** ☐ **Honesty** ☐ **Ambition** ☐ **Resilience** ☐ **Equity**

# School Information

- School Roll - 564
- Teaching Staff Roll - over 50 teaching staff
- Lesmahagow High School typically serves the villages of Lesmahagow, Auchenheth, Blackwood, Coalburn, Hawksland, Kirkmuirhill and the areas surrounding each village.
- Vision: Aspire to be our best
- Values: Respect, Honesty, Ambition, Resilience and Equity
- *More to follow in June...*

***“Aspire to be our best”***

To empower learners with the skills to succeed and realise their true potential.



**Respect** □ **Honesty** □ **Ambition** □ **Resilience** □ **Equity**

# Transition

The following events have been taking place throughout the year to help us get to know your children:

- *Journey to Lesmahagow – Transition Programme*
- DHT meeting with Primary Schools
- PT Pupil Support/Support for Learning Meetings at Primary Schools - Link Teachers
- Transition Support Meeting
- P7 Pupils and Parents Information Booklet
- School staff from different departments sharing work with primaries
- School Visits
- Virtual Parents Information Evening – December 2021

***“Aspire to be our best”***

To empower learners with the skills to succeed and realise their true potential.



**Respect** □ **Honesty** □ **Ambition** □ **Resilience** □ **Equity**

# Transition – What next?

The following events are due to take place throughout the remainder of the year to help us get to know your children:

- Departments visiting schools / delivering resources or lessons
- School Visits\*
- 2-Day Visit in June and In-person Information Evening\*
- Meet the pupils – Pupil Leadership Team
- Virtual Tour
- *Shining a Spotlight on....*PowerPoints.
- Pupil Letters
- New S1 Pupil Profile
- Enhanced Transition
- Sharing of S1 Classes
- Google Classrooms

***“Aspire to be our best”***

To empower learners with the skills to succeed and realise their true potential.



**Respect** ☐ **Honesty** ☐ **Ambition** ☐ **Resilience** ☐ **Equity**



# Pupil Equity Funding

**Mrs Smith**



***“Aspire to be our best”***

To empower learners with the skills to succeed and realise their true potential.



**Respect** ☐ **Honesty** ☐ **Ambition** ☐ **Resilience** ☐ **Equity**



LESMAHAGOW HIGH SCHOOL



# Pupil Equity

## **Pupil Equity Funding (PEF)**

The Pupil Equity Funding is allocated directly to schools and targeted at closing the poverty related attainment gap.

Every council area is benefitting from Pupil Equity Funding and 97% of schools in Scotland have been allocated funding for pupils in P1-S3 known to be eligible for free school meals.

***“Aspire to be our best”***

To empower learners with the skills to succeed and realise their true potential.



**Respect** ☐ **Honesty** ☐ **Ambition** ☐ **Resilience** ☐ **Equity**

# Cost of the School Day

We consider the support available for young people to facilitate participation and education under the following headings:

***“Aspire to be our best”***

To empower learners with the skills to succeed and realise their true potential.



**Respect** ☐ **Honesty** ☐ **Ambition** ☐ **Resilience** ☐ **Equity**

## Uniform

*Every Child should be entitled to a school uniform.*

- Uniform hub
- Prom exchange
- Pre Loved hub
- Winter Clothing

## Learning and Teaching

*No Child should have to pay for core learning and teaching materials.*

- Class Materials
- Revision Packs
- Stationary hub

## School Trips

*Where possible equity funding is used to help cover the costs that exist for trips to ensure that all pupils are given an equal experience.*

- Removing the costs for trips

## Clubs

*Every child should have equal access and opportunities to engage In school clubs.*

- Lunchtime Clubs
- Bus passes for after school clubs

## Period Poverty

*No child's educational experience should be limited due to access to sanitary products.*

- Access and availability of sanitary products

## Travel

*No child's access to education should be limited due to lack of transport.*

- Bus Passes

## Friendships

*Pupils should be helped and encouraged to create and maintain friendships.*

- PSE program

## Food

*Pupils are able to access Free School Meals*

- Free School Meals

## Home Learning

*No pupil is charged for core materials needed to complete any homework task.*

- Providing ICT equipment and home learner packs

***"Aspire to be our best"***

***To empower learners with the skills to succeed and realise their true potential.***



**Respect   □   Honesty   □   Ambition   □   Resilience   □   Equity**





**Il eligible pupils should have received an email with details.**



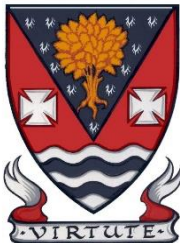
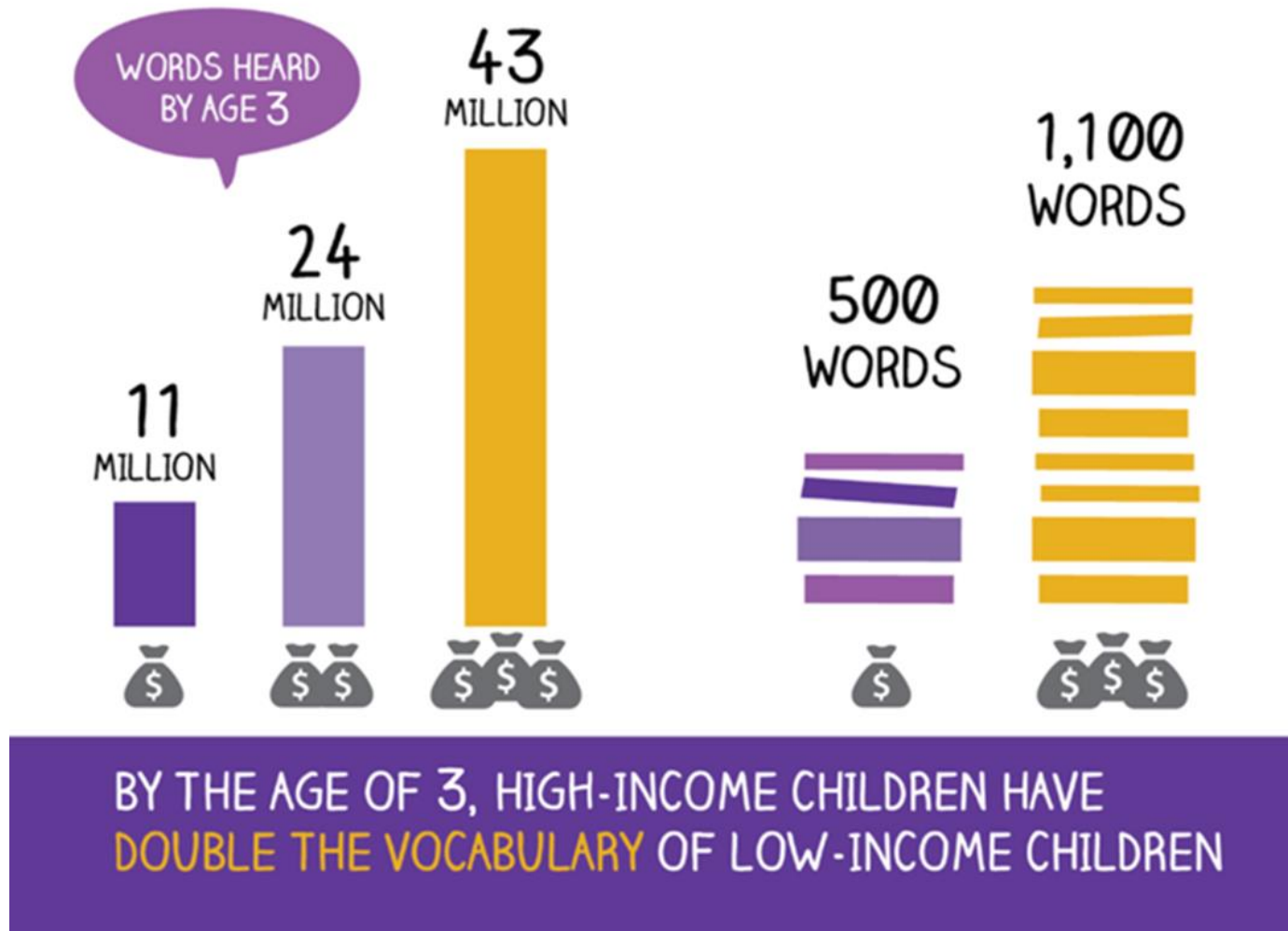
***"Aspire to be our best"***

To empower learners with the skills to succeed and realise their true potential.



**Respect   ☐   Honesty   ☐   Ambition   ☐   Resilience   ☐   Equity**

# Mind the Gap!



# Tackling the Attainment Gap

LITERACY	NUMERACY	HWB	ENGAGEMENT	ASPIRATION
<ul style="list-style-type: none"> <li>• 1-1 support</li> <li>• Online platforms- IDL, First News</li> <li>• Catch-up Literacy</li> <li>• Creative AS workshops</li> <li>• Drama workshops</li> <li>• Helen's Letters</li> <li>• Book club</li> <li>• Book shop trip</li> <li>• Writer's Museum</li> <li>• Author workshop</li> </ul>	<ul style="list-style-type: none"> <li>• 1-1 support</li> <li>• Online platforms- IDL, Education City</li> <li>• Creative AS workshops</li> <li>• Dyson workshop</li> <li>• Sumdog</li> <li>• Science Centre</li> <li>• STEM workshops</li> <li>• Dog's Trust workshops</li> </ul>	<ul style="list-style-type: none"> <li>• Mental health Ambassadors</li> <li>• Life Skills</li> <li>• Sirens Netball</li> <li>• PE kit</li> <li>• HE kit</li> <li>• ACE membership</li> <li>• PASS assessments</li> <li>• Outdoor learning</li> </ul>	<ul style="list-style-type: none"> <li>• PTs EIE</li> <li>• Targeted support</li> <li>• Reward trips and activities</li> <li>• Residential trip</li> <li>• Family Masterchef</li> <li>• Family coffee morning</li> <li>• Family day trip</li> <li>• ORB + CCI</li> <li>• Family events</li> <li>• Friday club</li> </ul>	<ul style="list-style-type: none"> <li>• Mentors</li> <li>• Career workshops</li> </ul>

***“Aspire to be our best”***

To empower learners with the skills to succeed and realise their true potential.



**Respect    Honesty    Ambition    Resilience    Equity**

# Get in Touch

*Mrs Smith*

Principal Teacher (Equity & Inclusion)

[gw10smithgemma8@glow.sch.uk](mailto:gw10smithgemma8@glow.sch.uk)

*Miss Fletcher*

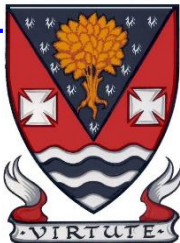
Principal Teacher (Equity & Inclusion)

[gw18fletcheranna@glow.sch.uk](mailto:gw18fletcheranna@glow.sch.uk)

Webpage <https://sites.google.com/sl.glow.scot/equitylhs/home>

***“Aspire to be our best”***

To empower learners with the skills to succeed and realise their true potential.



**Respect   □   Honesty   □   Ambition   □   Resilience   □   Equity**



# Growth Mindset

## Miss Fletcher

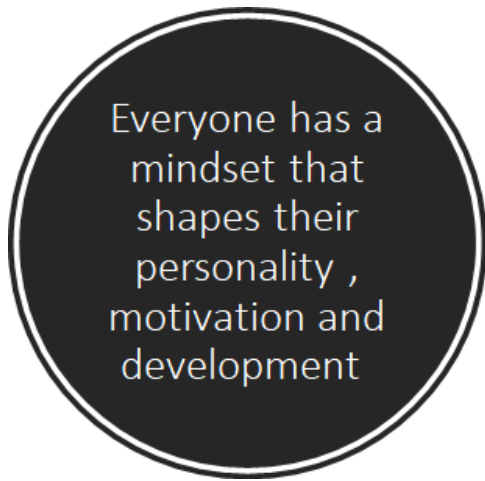


***“Aspire to be our best”***

To empower learners with the skills to succeed and realise their true potential.



**Respect** ☐ **Honesty** ☐ **Ambition** ☐ **Resilience** ☐ **Equity**



## GROWTH MINDSET



- Intelligence, personality and ability are open to development
- Effort makes a difference
- Failure is an opportunity to learn
- Focus is on improving

## FIXED MINDSET



- Intelligence, personality and ability are fixed
- The more effort you have to put in, the less your ability
- Failure is catastrophic
- Focus is on proving

***“Aspire to be our best”***

To empower learners with the skills to succeed and realise their true potential.



**Respect** ☐ **Honesty** ☐ **Ambition** ☐ **Resilience** ☐ **Equity**

# DEVELOPING A **GROWTH MINDSET**



<b>INSTEAD OF.....</b>	<b>TRY THINKING....</b>
I'm not good at this	What am I missing?
I give up	I'll use a different strategy
It's good enough	Is this really my best work?
I can't make this any better	I can always improve
This is too hard	This may take some time
I made a mistake	Mistakes help me to learn
I just can't do this	I am going to train my brain
I'll never be that smart	I will learn how to do this
Plan A didn't work	There's always Plan B
My friend can do it	I will learn from them

**Respect   ☐   Honesty   ☐   Ambition   ☐   Resilience   ☐   Equity**

# *What we plan to do to encourage a growth mindset at LHS?*



- Workshops to support our young people on how to adopt a growth mindset
- GMS buddy programme - S6 support pupils settle into S1
- 3 Step strategy sticker - available for pupils to put in jotters of selected subject they find challenging
- Growth mindset prompts visible in all classrooms to promote engagement

***“Aspire to be our best”***

To empower learners with the skills to succeed and realise their true potential.



**Respect** ☐ **Honesty** ☐ **Ambition** ☐ **Resilience** ☐ **Equity**



# Support for Learning

**Mrs Laird**



***“Aspire to be our best”***

To empower learners with the skills to succeed and realise their true potential.



**Respect   ☐   Honesty   ☐   Ambition   ☐   Resilience   ☐   Equity**

# Support for Learning Department



We have 2 Principal Teachers of Support for Learning. Please feel free to email them if you have any questions about a Support for Learning issue.

Hazel Laird PT SFL (all week) [gw07lairdhazel2@glow.sch.uk](mailto:gw07lairdhazel2@glow.sch.uk)

Morag Story PT SFL (Monday/Tuesday) [gw20storrmorag@glow.sch.uk](mailto:gw20storrmorag@glow.sch.uk)

***“Aspire to be our best”***

To empower learners with the skills to succeed and realise their true potential.



**Respect** ☐ **Honesty** ☐ **Ambition** ☐ **Resilience** ☐ **Equity**



**Here are some examples of needs that might require support (it is not an exhaustive list)**

- Issues with literacy or numeracy (being behind their chronological age in reading, spelling or number skills)
- Dyslexia/Dyscalculia
- Hearing or visual impairment
- Physical disability
- Illness affecting learning
- ASD/ADHD/TOURETTES

***“Aspire to be our best”***

To empower learners with the skills to succeed and realise their true potential.



**Respect   ☐   Honesty   ☐   Ambition   ☐   Resilience   ☐   Equity**

# SfL cont...

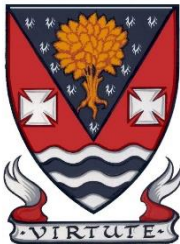
- Mental health issues
- Anxiety or worry at times of transition
- Being looked after or accommodated
- Interrupted learning

There is no “one size fits all” approach to these needs e.g. One pupil with ASD may need no input from SFL and another very regular support. One dyslexic pupil may need lots of literacy intervention, but another just the use of IT in their assessments. **SFL is about INDIVIDUALS and planning for their INDIVIDUAL NEEDS.**

We create a **Personal Learning Plan** so all staff are aware of your child's needs and to allow us to plan any interventions that are necessary.

***“Aspire to be our best”***

To empower learners with the skills to succeed and realise their true potential.



**Respect** □ **Honesty** □ **Ambition** □ **Resilience** □ **Equity**

# Inclusion

## Mrs Docherty



***“Aspire to be our best”***

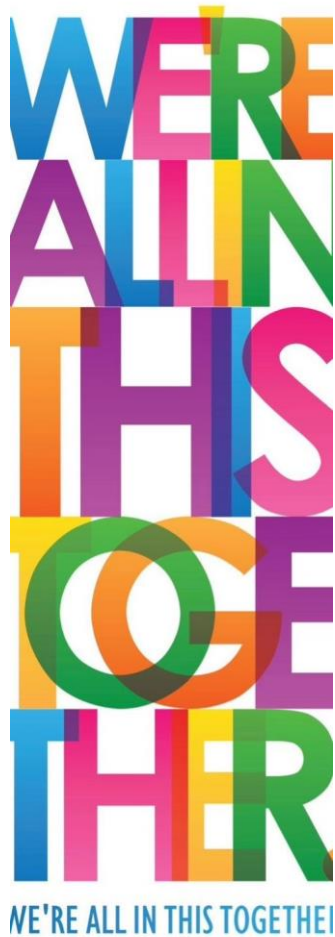
To empower learners with the skills to succeed and realise their true potential.



**Respect** ☐ **Honesty** ☐ **Ambition** ☐ **Resilience** ☐ **Equity**



# Inclusion Support Department



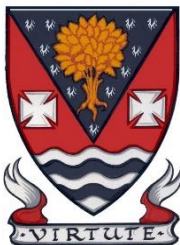
The Inclusion Support Team became an integral part of Lesmahagow High School as of early 2020. The team support inclusion broadly across the school, however more specifically support young people who have been allocated a specialist education placement by South Lanarkshire Council.

Our provision is expanding yearly, and as a school we are learning and growing in knowledge whilst developing our inclusive approaches in partnership with pupils, parent/carers, staff and other key professionals to best meet the needs of our amazing young people.

If you require more information please feel free to contact us:

Pamela Docherty [Gw19dochertypamela@glow.sch.uk](mailto:Gw19dochertypamela@glow.sch.uk)

Or follow us [@LHSInclusionST](https://twitter.com/LHSInclusionST) to keep up to date with our provision development.



***“Aspire to be our best”***

To empower learners with the skills to succeed and realise their true potential.

**Respect   □   Honesty   □   Ambition   □   Resilience   □   Equity**

# The School Day

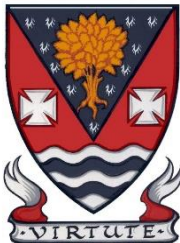
Our school day is different from our Primary Schools. Each day will begin promptly with tutor time at 8.40. finishing at 3.35 Monday to Thursday and 12.30 on Friday.

Monday - Thursday	
Period	Time
Tutor Time	08.40-08.50am
1	08.50-09.40am
2	09.40-10.30am
3	10.30-11.20am
Interval	11.20-11.35am
4	11.35-12.25pm
5	12.25-13.15pm
Lunch	13.15-13.55pm
6	13.55-14.45pm
7	14.45-15.35pm

Friday	
Period	Time
Tutor Time	08.40-08.50am
1	08.50-09.40am
2	09.40-10.30am
Interval	10.30-10.50am
3	10.50-11.40pm
4	11.40-12.30pm

***“Aspire to be our best”***

To empower learners with the skills to succeed and realise their true potential.



**Respect    Honesty    Ambition    Resilience    Equity**

# Uniform

The uniform for Lesmahagow High School is:

- Plain black blazer with school badge
- Plain white collared shirt or blouse
- School tie
- Plain black trousers or skirt
- Plain v-neck jumper or cardigan without logos
- Plain black footwear (including laces)

The following items are **NOT** acceptable:

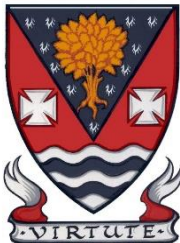
- Jeans or clothing with jean-like material
- Hoodies including zippers
- Football colours/tops
- Baseball caps
- Tracksuits or jogging trousers/sportswear
- Leggings
- Denim jackets



**Our blazer supplier is  
Scotcrest, who are based  
in Hamilton  
([www.scotcrestschools.co.uk](http://www.scotcrestschools.co.uk))**

***“Aspire to be our best”***

To empower learners with the skills to succeed and realise their true potential.



**Respect    Honesty    Ambition    Resilience    Equity**

# General Information

- **Parent Pay** is used for purchasing school lunches and for all trips therefore it is extremely important that parents sign up to it. Further information will be made available in **August**.
- It is vital that we have **up to date contact details** including mobile numbers and email addresses. An annual data check form will be issued in August. Please continue to make us aware of any further changes throughout the year.
- If applicable, please make sure you (re)apply for any clothing grants, free meal entitlement and school transport. This is available soon and should be completed online on the South Lanarkshire website.

***“Aspire to be our best”***

To empower learners with the skills to succeed and realise their true potential.



**Respect** ☐ **Honesty** ☐ **Ambition** ☐ **Resilience** ☐ **Equity**

# General Information

- Arrangements for two-day visit in June:
  - Senior guides will take the pupils to and from classes for both days and they will be allowed to leave class a few minutes early.
  - A timetable incorporating learning, team building and wellbeing tasks will be offered.
  - Transport will be arranged by each primary school.
  - Followed by In-person Information Evening.
- Do not worry if you get lost!

***“Aspire to be our best”***

To empower learners with the skills to succeed and realise their true potential.



**Respect** ☐ **Honesty** ☐ **Ambition** ☐ **Resilience** ☐ **Equity**



# Contact

We want to hear from you, so if there are any issues or concerns, please contact your child's pupil support teacher (in the first instance) via the school office on **01555 896010** or [office@lesmahagow.s-lanark.sch.uk](mailto:office@lesmahagow.s-lanark.sch.uk)



***"Aspire to be our best"***

To empower learners with the skills to succeed and realise their true potential.



**Respect** ☐ **Honesty** ☐ **Ambition** ☐ **Resilience** ☐ **Equity**

# Further Information

The school will regularly communicate with you via letter, email, text message, through social media and the school app. Copies of all communications with parents will also be available on the school website.

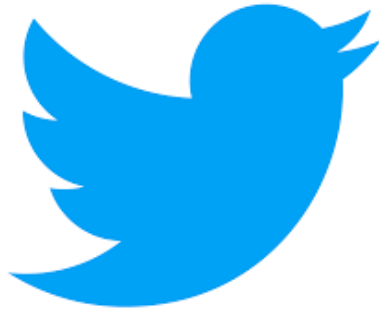
The collage features several items from Lesmahagow High School:

- Twitter Post:** A tweet from @LesmahagowHigh with a yellow highlight on the handle. The profile picture shows the school crest.
- Young Musician of the Year:** A poster for the 'Young Musician of the Year' competition, held on Monday 5th June at Lesmahagow High School. It features a piano keyboard graphic and ticket prices of £4 (standard) and £2 (concession).
- Transition!** A blue starburst graphic with the word 'Transition!' in orange, overlaid on a tweet about welcoming P7 pupils.
- Twitter Post:** A tweet about a 'Fabulous opportunity for 16+ pupils in @LesmahagowHigh (and staff!) @Glasgow2018' dated 29 May.
- Twitter Post:** A tweet wishing a 'lovely weekend in the sunshine to all pupils and staff (and good luck to all senior pupils sitting SQA exams today and/or Monday)' dated 26 May, accompanied by a photo of a blue sky with clouds.
- Calendar:** A small calendar snippet showing the dates 17, 18, 19, 20, 21, 26, 27, 28, and 29.
- School Crest:** The Lesmahagow High School crest is visible in the bottom right corner, featuring a shield with a cross and the motto 'VIRTUTE'.

**Respect** ☐ **Honesty** ☐ **Ambition** ☐ **Resilience** ☐ **Equity**

# Twitter

We share lots of news, information and pupil achievements through our Twitter platform. P7 Transition info will also be shared here.



**@lesmahagowhigh**



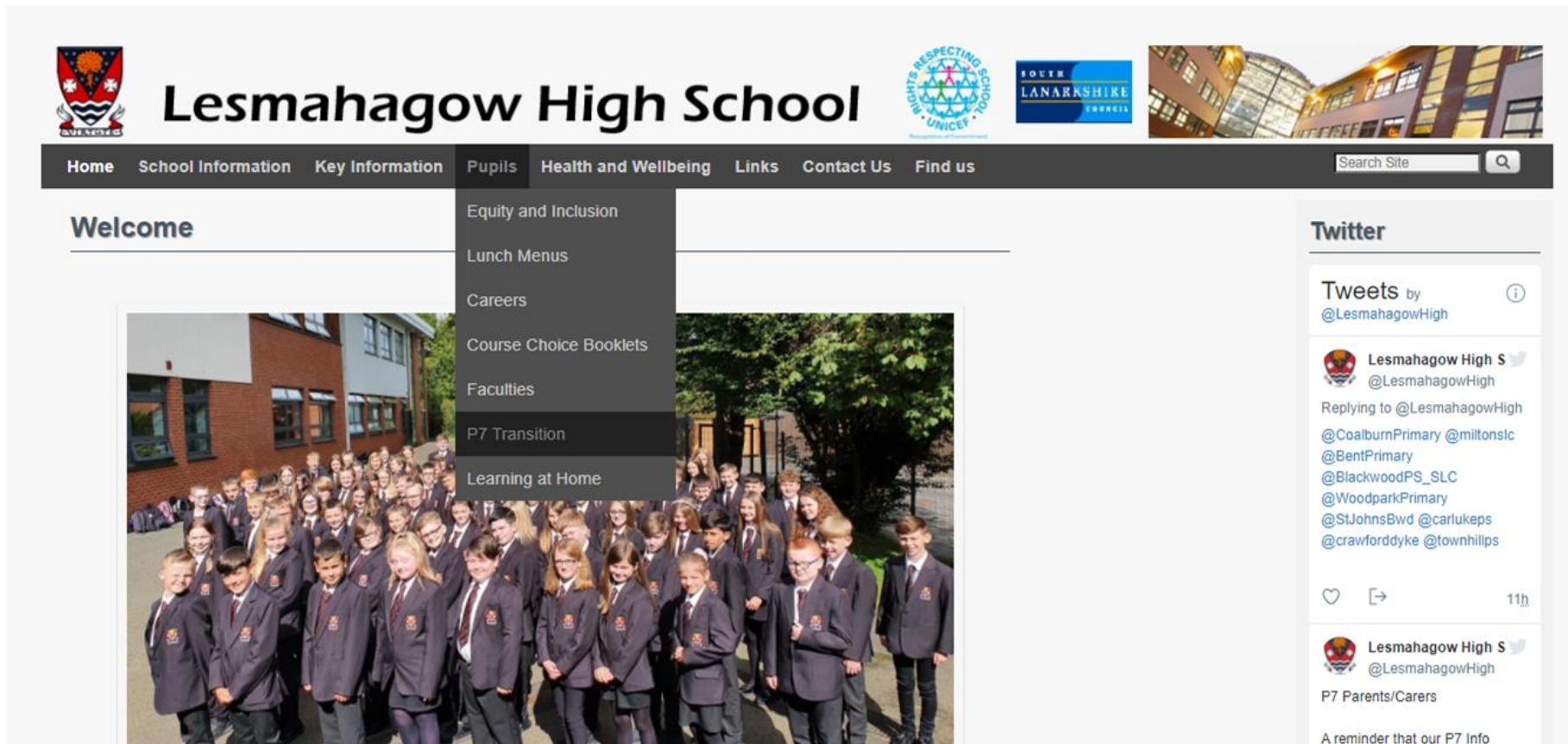
***"Aspire to be our best"***

To empower learners with the skills to succeed and realise their true potential.

**Respect** ☐ **Honesty** ☐ **Ambition** ☐ **Resilience** ☐ **Equity**



# P7 Transition Webpage



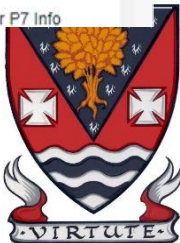
The screenshot displays the Lesmahagow High School website. The header features the school's crest, name, and logos for UNICEF and the Youth of Lanarkshire Council. A navigation bar includes links for Home, School Information, Key Information, Pupils, Health and Wellbeing, Links, Contact Us, and Find us. A search bar is located on the right. The 'Pupils' menu is open, showing options: Equity and Inclusion, Lunch Menus, Careers, Course Choice Booklets, Faculties, P7 Transition, and Learning at Home. The main content area shows a large group photo of P7 students in school uniforms. On the right, a Twitter feed displays tweets from @LesmahagowHigh, including a reply to @LesmahagowHigh mentioning several primary schools and a tweet titled 'P7 Parents/Carers' with a reminder about P7 Info.

<http://www.lesmahagow.s-lanark.sch.uk/p7-transition/>

***“Aspire to be our best”***

To empower learners with the skills to succeed and realise their true potential.

**Respect   □   Honesty   □   Ambition   □   Resilience   □   Equity**



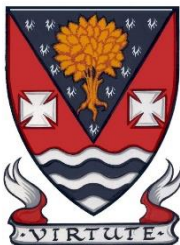
# Evaluation

- Information Evening Evaluation Form:  
<https://forms.gle/PGWhX74fvdFX7ftT8>
- What can we do to help you prepare our young people for August?
- What would you like to know for our next Information Evening?.



***“Aspire to be our best”***

To empower learners with the skills to succeed and realise their true potential.



**Respect** ☐ **Honesty** ☐ **Ambition** ☐ **Resilience** ☐ **Equity**



# QUESTIONS



## P7 Transition Google Form

<https://forms.gle/AhVHjJmiqmDPk7768>



### LHS P7 Transition Question Form

Lesmahagow High School staff would like to ensure your child's transition from primary to secondary school runs as smoothly as possible. We know that current school closures have brought about various challenges, but please be assured that we continue to operate behind the scenes to ensure we provide the best possible virtual transition for your child.

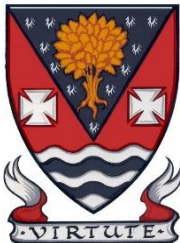
We are keen to hear from you, answer any questions you may have, and ultimately reassure you and your family about the transition process.

Please complete the form below and we will get back to you shortly.

Mr D Robertson - [qw10robertsondavid8@glow.sch.uk](mailto:qw10robertsondavid8@glow.sch.uk)  
Mrs P Docherty - [qw19dochertypamela@glow.sch.uk](mailto:qw19dochertypamela@glow.sch.uk)

***“Aspire to be our best”***

To empower learners with the skills to succeed and realise their true potential.



**Respect   ☐   Honesty   ☐   Ambition   ☐   Resilience   ☐   Equity**